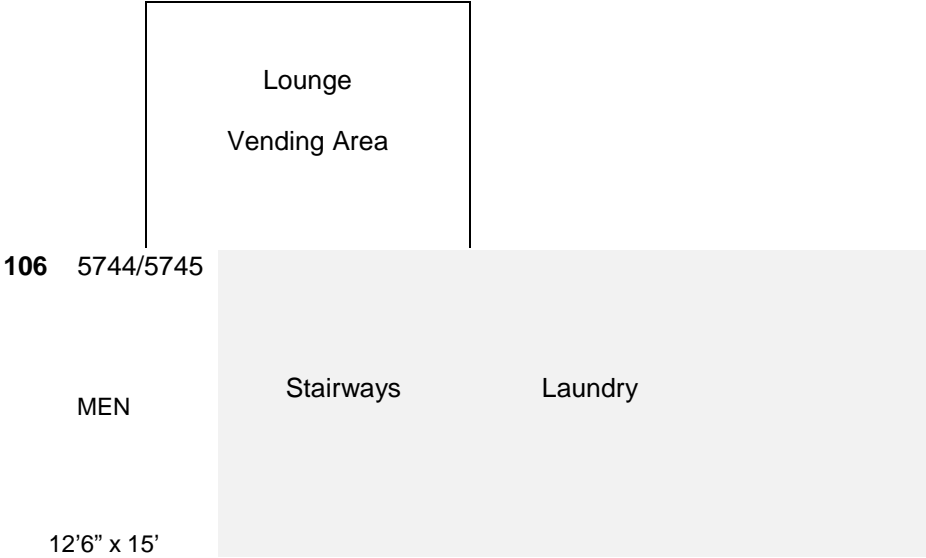


--	--	--	--	--	--	--	--	--	--	--

Weigle Hall 1st-Floor
Possible # of Residents: 23



Weigle Hall - 2nd Floor

Possible # of Residents: 25

207 5774/5775		206 5772/5773	205 5770/5771	204 5768/5769		203 5766/5767 Required Db/ Possible Triple	202 5764/5765	201 5762/5763
WOMEN	Stairs	WOMEN	WOMEN	RA	Janitor Closet	WOMEN	WOMEN	WOMEN
12'6" x 15'		12'6" x 14'1"	12'6" x 13'11"			12'6" x 13'10"	12'6" x 16'5"	12'6" x 13'10"
Hallway								
208 5776/5777	209 5778/5779 Required Db/ Possible Triple	210 5780/5781	Bathroom		211 5782/5783 Required Db/ Possible Triple	212 5784/5785	213 5786/5787	S T A I R S
WOMEN	WOMEN	WOMEN			WOMEN	WOMEN	WOMEN	
12'6" x 15'10"	12'6" x 16'6"	12'6" x 15'10"			12'6" x 16'6"	12'6" x 13'11"	12'6" x 13'11"	